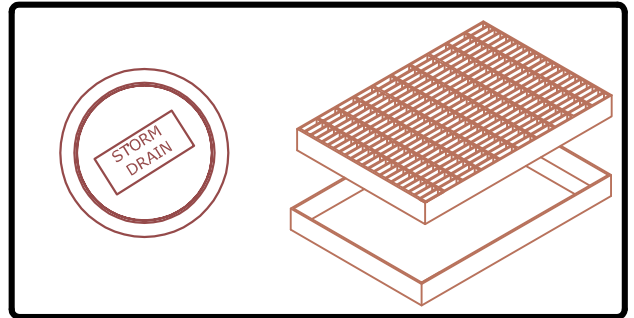


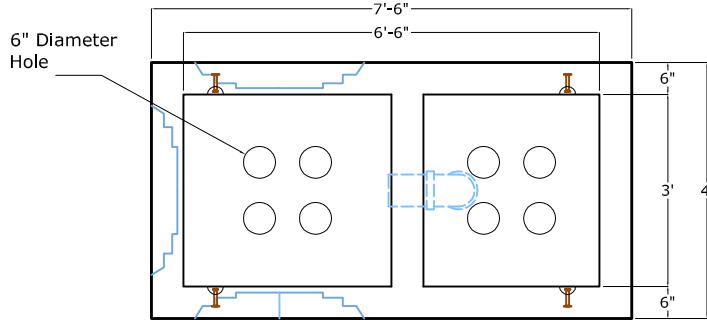
PLAN VIEW LID

2t x 3 3/8 Lifting Pins



Cast Iron Frame and Cover SBF-1900

24" x 36" Bicycle Proof Steel Grate & Frame Type 24-13



PLAN VIEW BASE

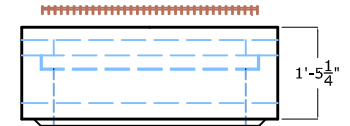
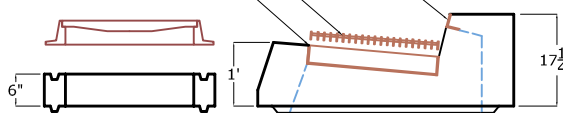
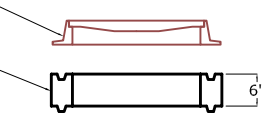
6" Diameter Hole

NOTES:  
1. Heights shown are nominal dimensions. Actual dimensions vary to allow a 1/2" mortar or sealant joint.

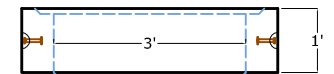
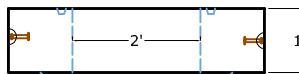
Cast Iron SBF-1900 Frame & Cover

Grade Ring as required

Traffic Grate  
Cast-In-Frame  
Nosing Angle  
2 1/2" x 2 1/2" x 1/4"



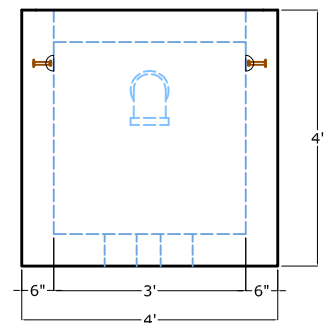
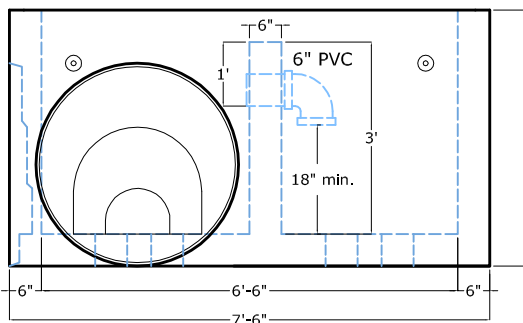
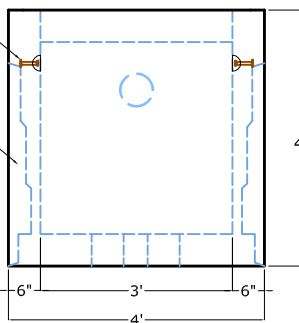
LID  
(2,640 lbs.)



2 tons x 3-3/8" Lifting Pins

Standard Knockout  
Max. 32"  
Min. 12"

BASE  
(8,555 lbs.)



END ELEVATION

FRONT ELEVATION

END ELEVATION



1625 E. DONOVAN RD., STE. C  
SANTA MARIA, CA 93454  
PH: (805) 928-2855  
FAX: (805) 928-2114  
www.midstateconcrete.com

**INFILTRATOR BASIN**  
**SLO COUNTY**  
**CONCEPT 1**

REV. 07/12