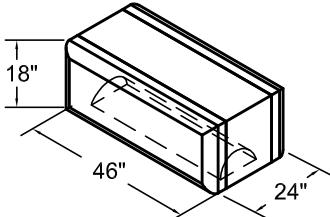


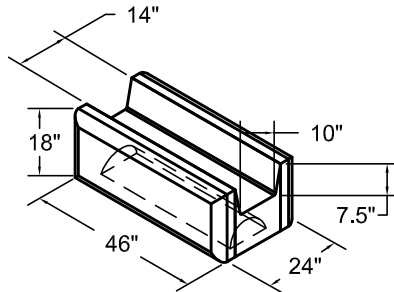
Perimeter Free-Standing Series (Finished on two sides)

Straight

Full (46")
10.46 Cft
1496 Lbs +/-

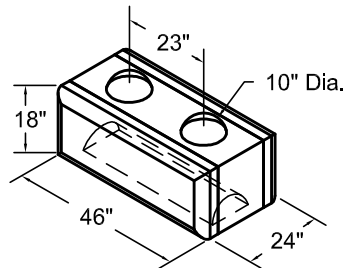


Half (23")
5.22 Cft
747 Lbs +/-



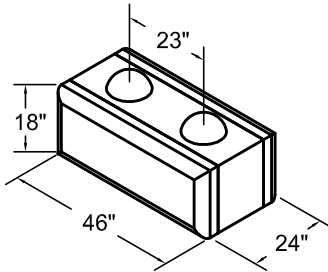
Full (46")
7.98 Cft
1141 Lbs +/-

Half (23")
3.97 Cft
567 Lbs +/-



Full (46")
10.68 Cft
1527 Lbs +/-

Half (23")
5.33 Cft
762 Lbs +/-

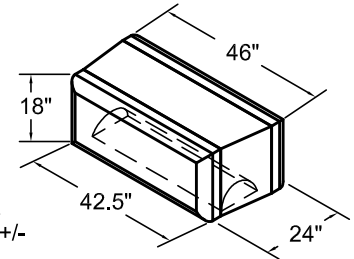


Full (46")
11.53 Cft
1649 Lbs +/-

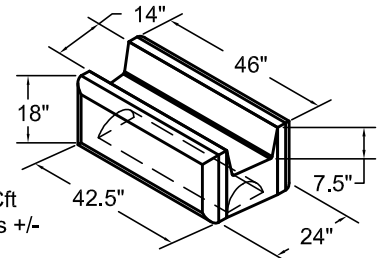
Half (23")
5.74 Cft
821 Lbs +/-

Curved

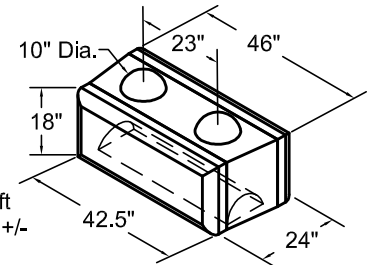
10.03 Cft
1434 Lbs +/-



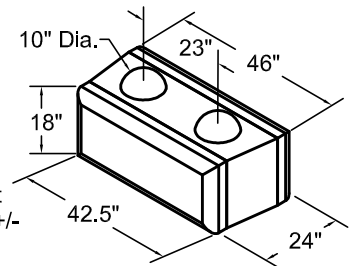
7.65 Cft
1093 Lbs +/-



10.24 Cft
1465 Lbs +/-



11.10 Cft
1588 Lbs +/-



Top - Smooth or Textured

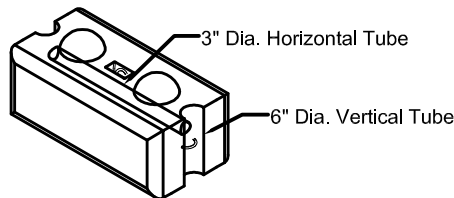
Top - Garden

Middle

Bottom

Force Protection

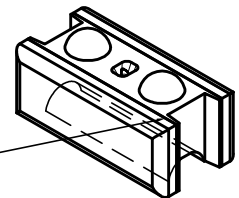
All block styles are available with 3" Horizontal Tube (for post tension cable) and/or 6" Vertical Tubes (for mechanical tie-down bolts) to allow the blocks to be used in a Force Protection application.



(Straight full bottom block shown)

Variable Radius Walls

All straight block styles are available with the end block insert to allow the blocks to be used in variable radius walls.



Field saw blocks on ends as needed to provide variable radius walls

REV. 09/07

MID STATE
Concrete Products
Santa Maria, Ca

1625 E. DONOVAN RD., STE. C
SANTA MARIA, CA 93454
PH: (805) 928-2855
FAX: (805) 928-2114
www.midstateconcrete.com

REDI ROCK
FREE-STANDING
BLOCKS

