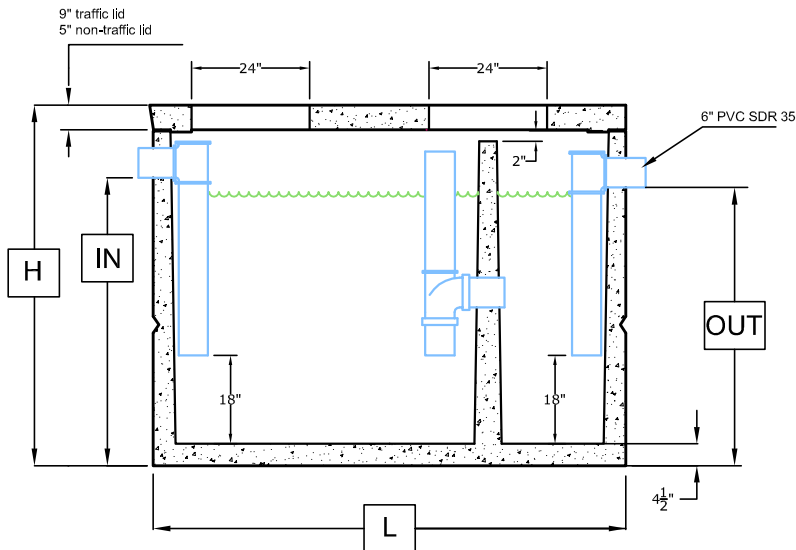


PLAN VIEW

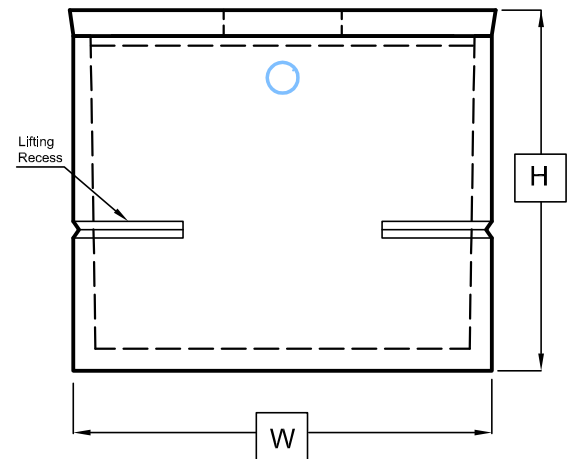
	Outside Width w	Outside Length L	Outside Height H	Inlet (IN)	Outlet (OUT)	Weight
800 Gallon - NON TRAFFIC	6' - 2"	8' - 0"	4' - 4"	3' - 2"	3' - 0"	11,200
800 Gallon - TRAFFIC	6' - 2"	8' - 0"	4' - 8"	3' - 2"	3' - 0"	12,740
1000 Gallon - NON TRAFFIC	6' - 2"	8' - 0"	5' - 1"	3' - 10"	3' - 8"	12,700
1000 Gallon - TRAFFIC	6' - 2"	8' - 0"	5' - 5"	3' - 10"	3' - 8"	13,600
1200 Gallon - NON TRAFFIC	6' - 2"	8' - 0"	5' - 9"	4' - 7"	4' - 5"	13,760
1200 Gallon - TRAFFIC	6' - 2"	8' - 0"	6' - 1"	4' - 7"	4' - 5"	16,820
1500 Gallon - NON TRAFFIC	7' - 1"	8' - 0"	6' - 1/2"	4' - 10- 1/2"	4' - 8 1/2"	16,060
1500 Gallon - TRAFFIC	7' - 1"	8' - 0"	6' - 4 1/2"	4' - 10- 1/2"	4' - 8 1/2"	19,800

NOTE:

INTERIOR OF GREASE INTERCEPTOR TO BE COATED WITH CS-55.



LONGITUDINAL SECTION



END ELEVATION

MID STATE
Concrete Products
Santa Maria, Ca

1625 E. DONOVAN RD., STE. C
SANTA MARIA, CA 93454
PH: (805) 928-2855
FAX: (805) 928-2114
www.midstateconcrete.com

GOLETA SANITARY
GREASE INTERCEPTORS